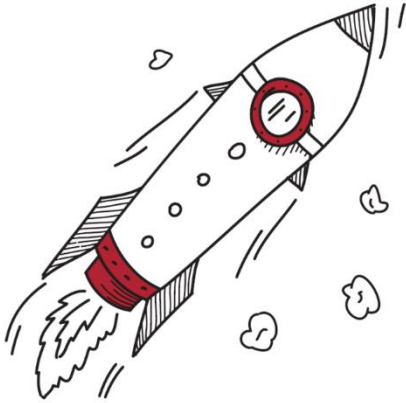


Aluflexpack Innovation **challenge #3**

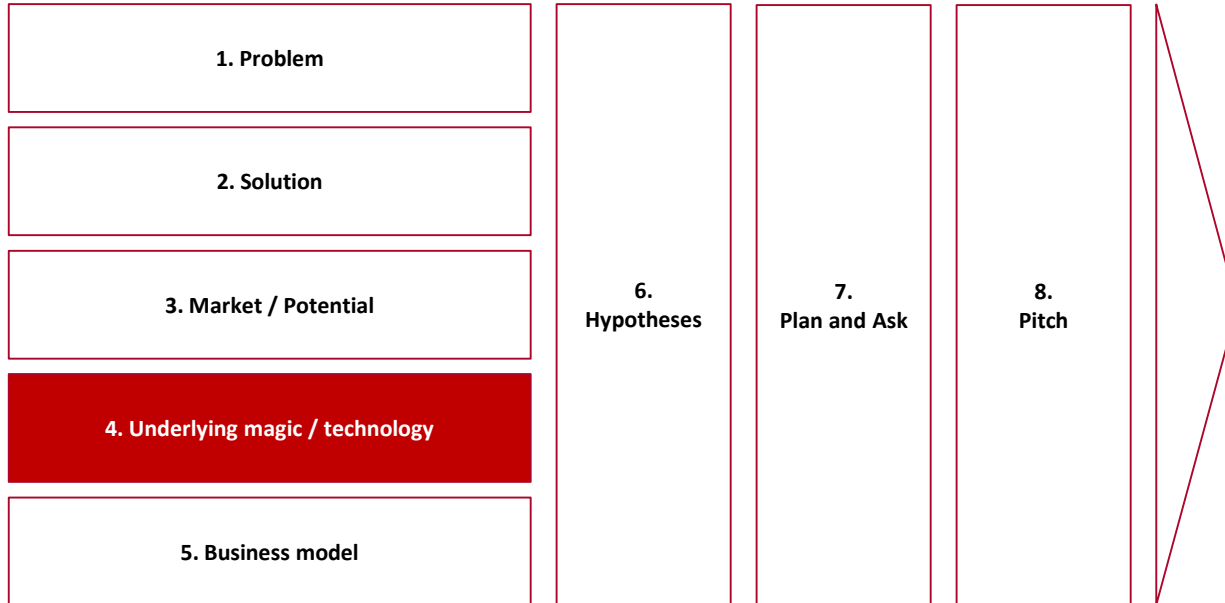


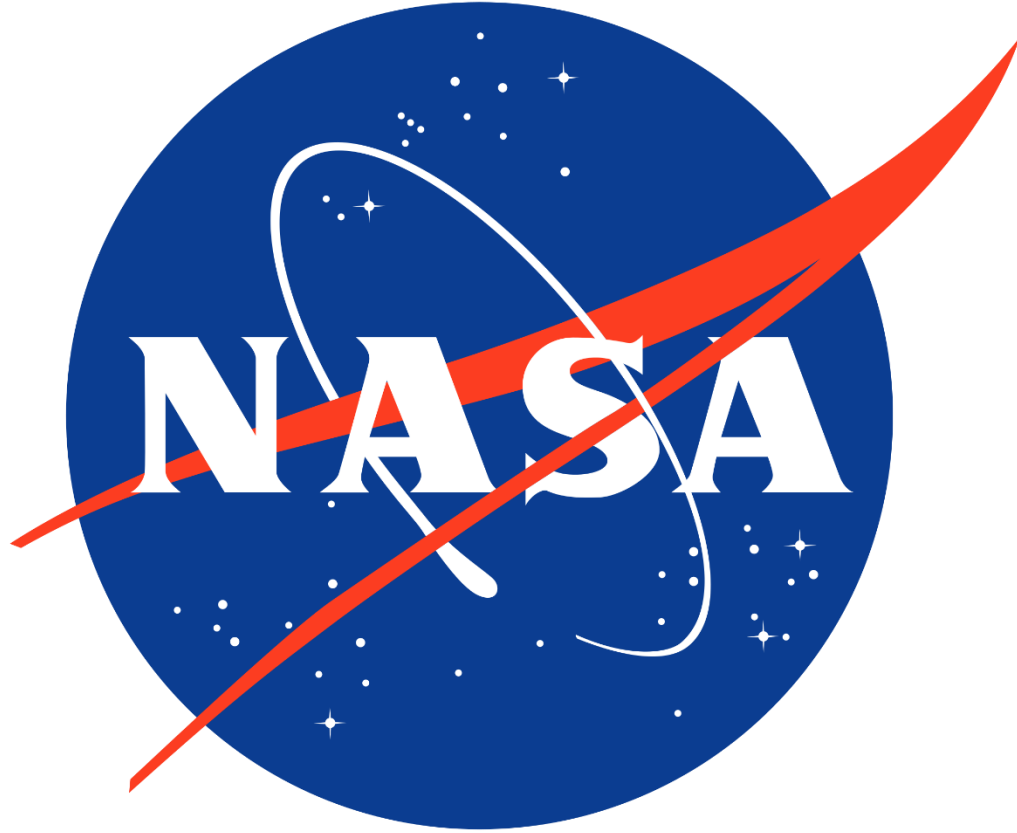
Technology Readiness

11 September 2024

“We become the most integrated success maker for a lasting packaging experience!”

Idea Maturation framework

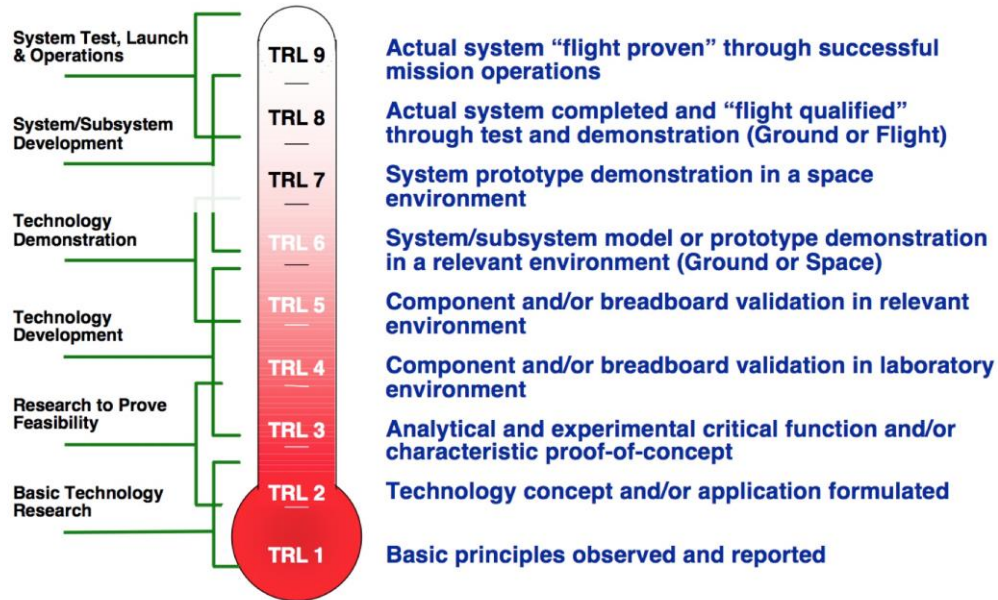




The original



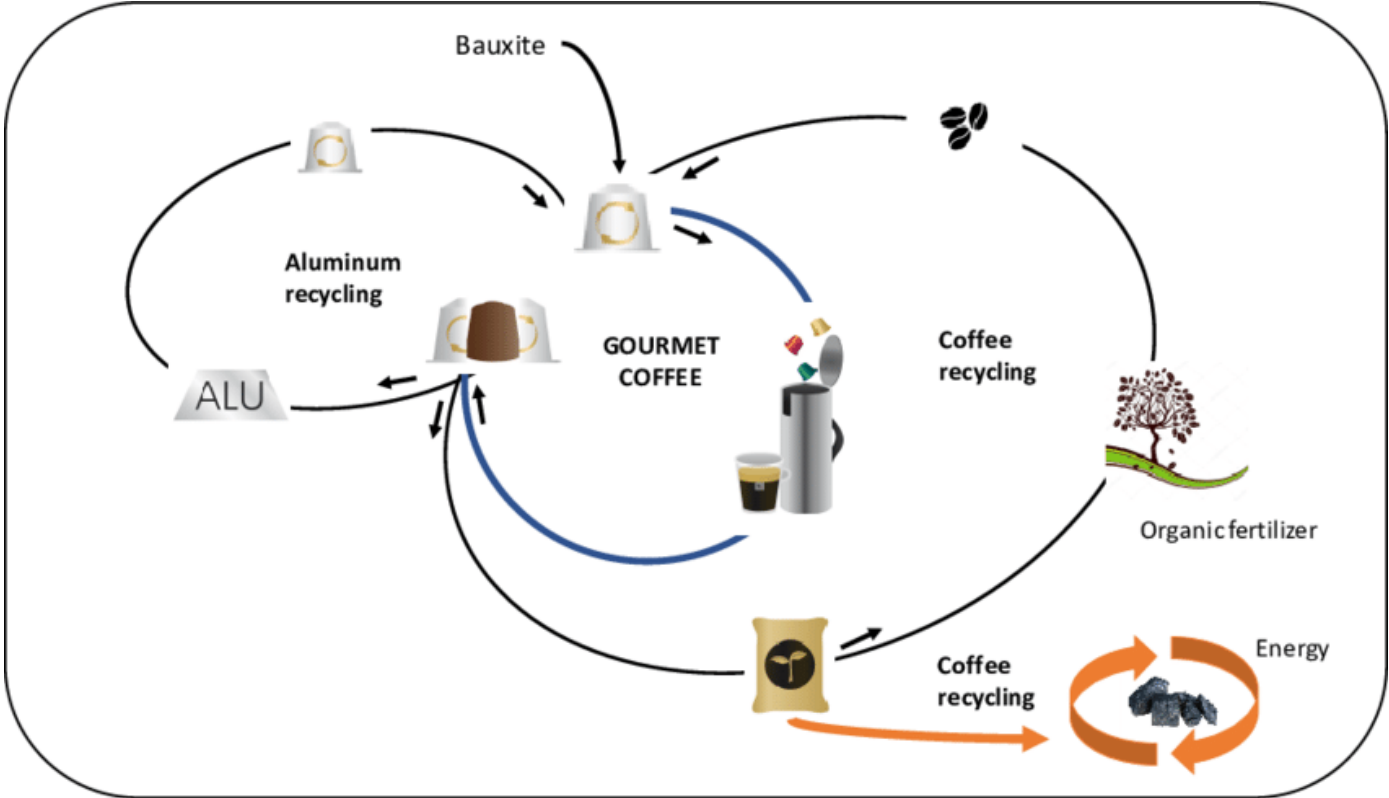
NASA/DOD Technology Readiness Level



Technology Readiness Levels

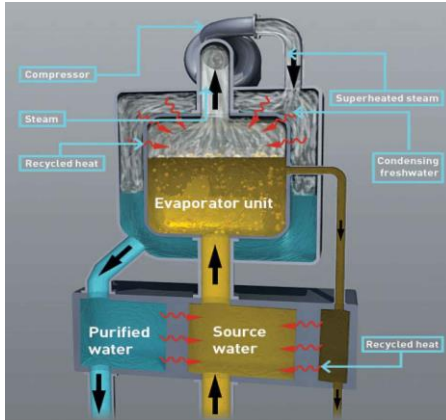
- TRL 0: Idea.** Unproven concept, no testing has been performed.
- TRL 1: Basic research.** Principles postulated and observed but no experimental proof available.
- TRL 2: Technology formulation.** Concept and application have been formulated.
- TRL 3: Applied research.** First laboratory tests completed; proof of concept.
- TRL 4: Small scale prototype** built in a laboratory environment ("ugly" prototype).
- TRL 5: Large scale prototype** tested in intended environment.
- TRL 6: Prototype system** tested in intended environment close to expected performance.
- TRL 7: Demonstration system** operating in operational environment at pre-commercial scale.
- TRL 8: First of a kind commercial system.** Manufacturing issues solved.
- TRL 9: Full commercial application,** technology available for consumers.

The underlying technology

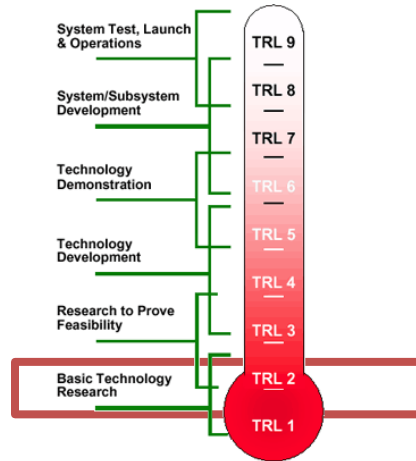


Process

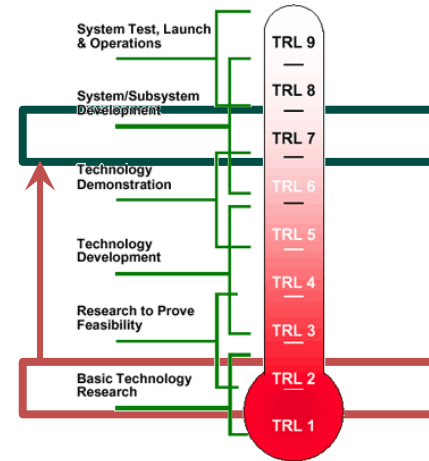
1. What are the key technologies/underlying magic needed to realise your idea?



2. What is the TRL of these technologies?



3. What will it take to get to TRL 7 or above (i.e. “real world”)?



Instructions

Instructions

- Which underlying magic is needed to realise your idea?
- List all the “technologies” and then focus on the most critical
- What is the current TRL of that “technology”?
- What will it take to achieve TRL level 7 (“Real world demonstration”) or above?

Technology Readiness Levels

- TRL 0: Idea.** Unproven concept, no testing has been performed.
- TRL 1: Basic research.** Principles postulated and observed but no experimental proof available.
- TRL 2: Technology formulation.** Concept and application have been formulated.
- TRL 3: Applied research.** First laboratory tests completed; proof of concept.
- TRL 4: Small scale prototype** built in a laboratory environment (“ugly” prototype).
- TRL 5: Large scale prototype** tested in intended environment.
- TRL 6: Prototype system** tested in intended environment close to expected performance.
- TRL 7: Demonstration system** operating in operational environment at pre-commercial scale.
- TRL 8: First of a kind commercial system.** Manufacturing issues solved.
- TRL 9: Full commercial application,** technology available for consumers.